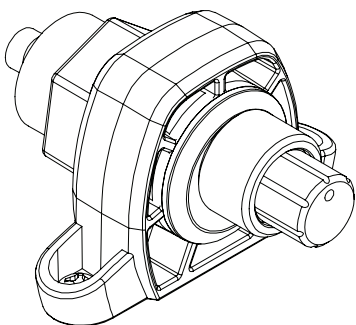


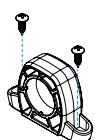
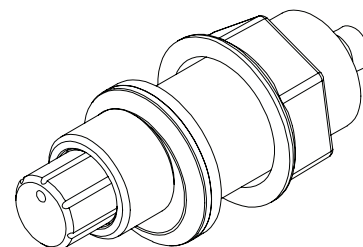
DUAL ZONE

Volume Control



(FUN) - CTION

we design it. we build it. you enjoy it.



Surface Mount

Screw mount to a flat surface.

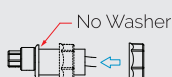
or

1

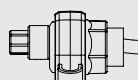


Flush Mount

Drill hole 7/8" Where you want your DZVC located.



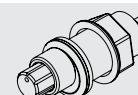
No Washer



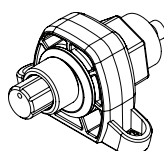
2



Install Washer

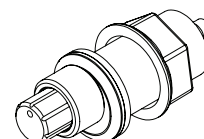


Run your DZVC through the mounting hole and install the backing nut. Once happy with orientation tighten the backing nut.



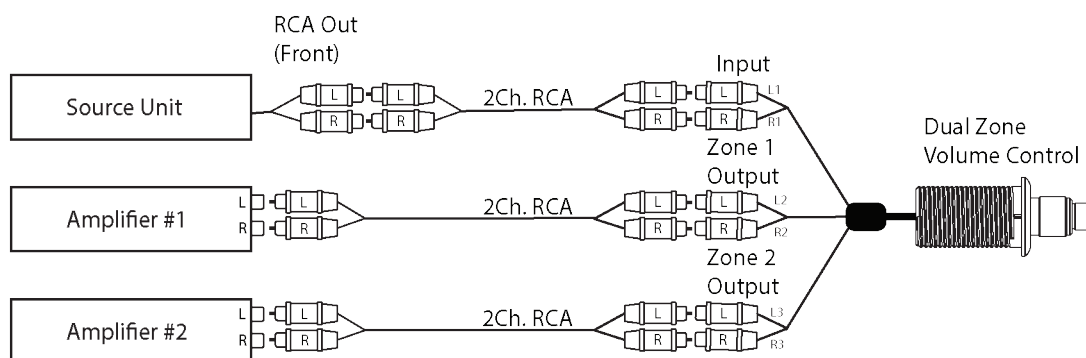
3

Enjoy your music to the fullest.



For installation assistance, email info@roswellmarine.com

EXAMPLE WIRING DIAGRAM



Welcome to the family.

www.roswellmarine.com