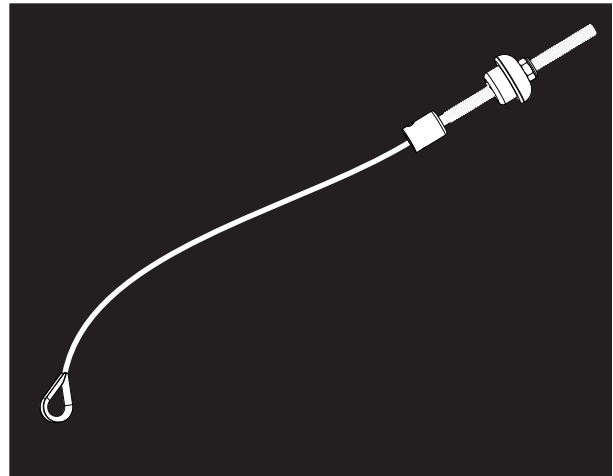
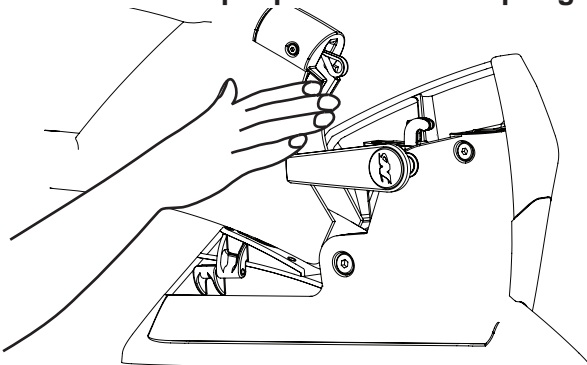


### Tools Required



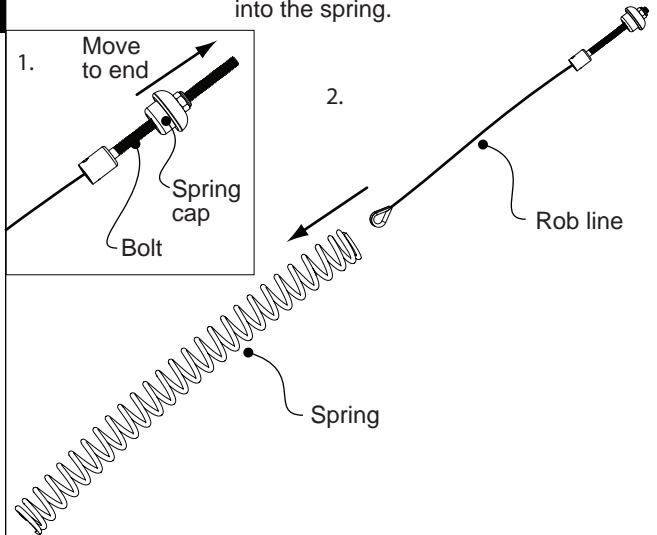
## ! WARNING !

Always use caution with the tower in the folded position. Be careful to keep the tower from pivoting upwards while servicing the spring. Roswell recommends 2 people service the spring.



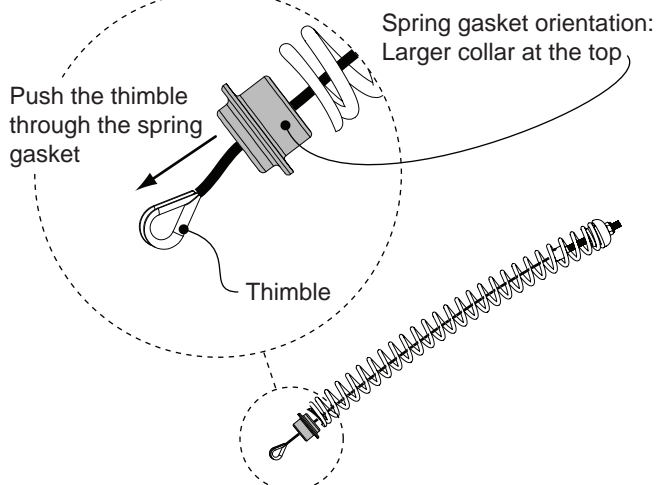
## A

1. Spray the bolt with anti seize, turn the spring cap until it's at the end of the bolt. 2. Insert the rob line into the spring.



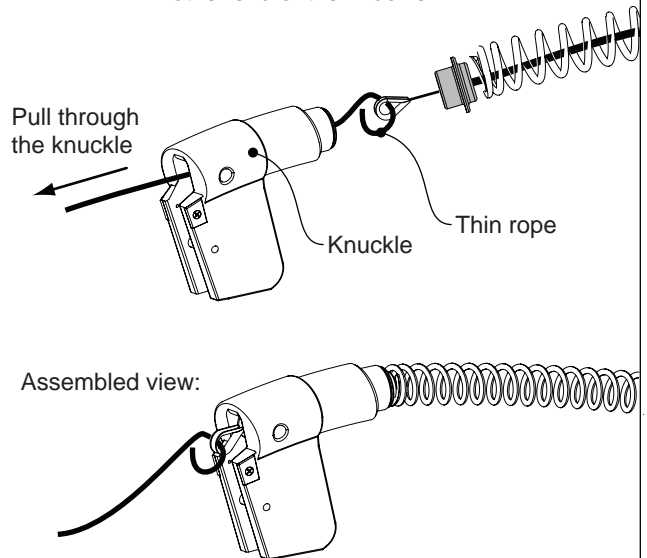
## B

Push the thimble through the spring gasket at the bottom of the spring, make sure the spring gasket is oriented as shown.



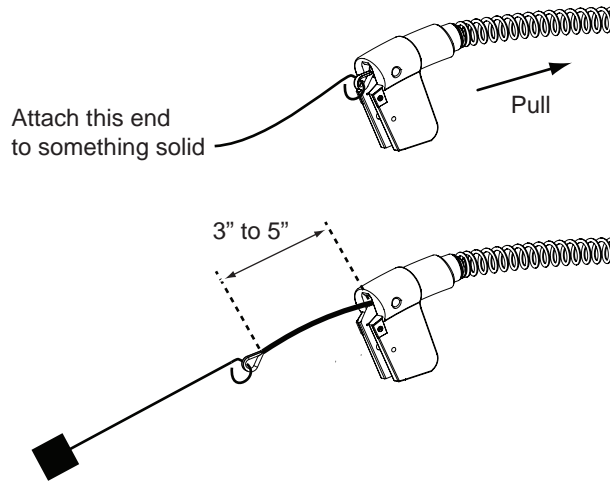
## C

Tie some thin rope to the thimble and pull it through the other end of the knuckle.

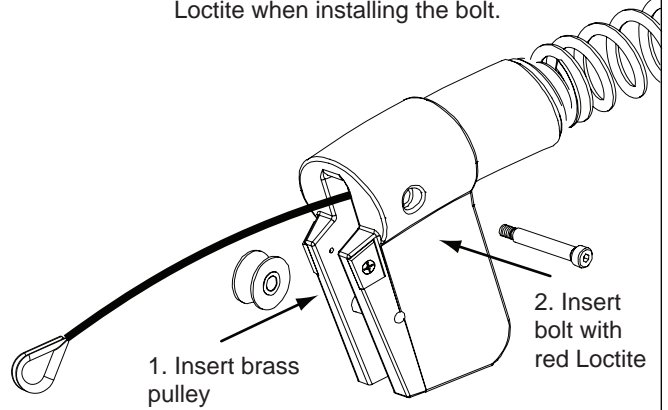


**D**

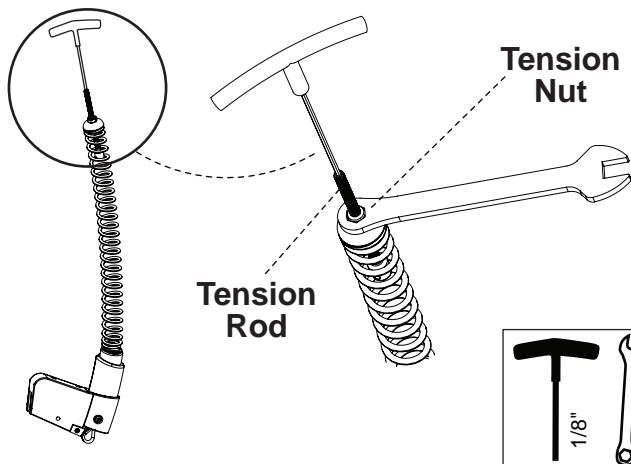
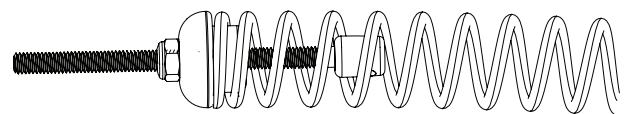
Attach the end of the thin rope to something solid, or have somebody hold it. Then pull on the spring assembly so that 3" to 5" of the rob line is outside the knuckle.

**E**

With the thimble still pulled out, insert the brass pulley into the knuckle and then insert the bolt to assemble it. Use red Loctite when installing the bolt.

**F**

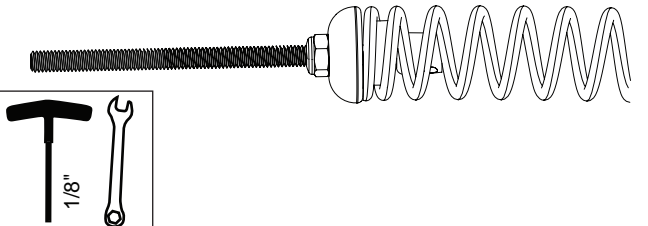
With the spring assembly completely out of the tower, grasp the end of the spring in one hand. Place your 1/2" closed end wrench over the tension rod and onto the tension nut. Place a 1/8" T-handle Allen key into the tension rod. Grasp the Allen key with your other hand and have a helper turn the wrench to tighten the nut and compress the spring.

**G**

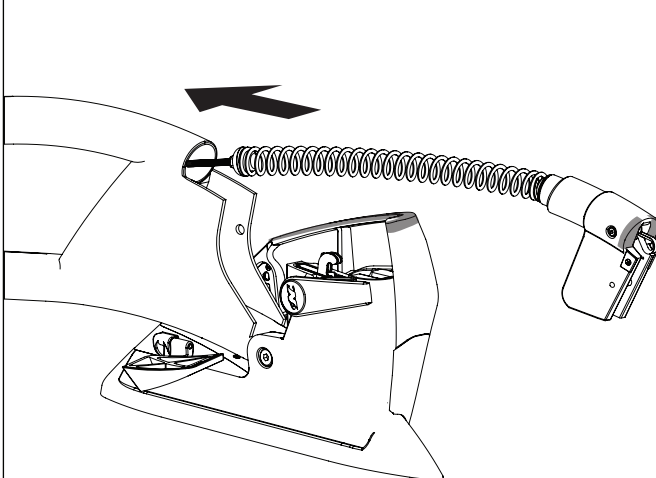
This is roughly how the top of your spring assembly should look after you have removed it from your tower.

**With your T-handle engaged in the Tension Rod and your wrench around the Tension Nut, tighten the nut by rotating the wrench not the Allen Key. Tighten the nut as much as possible to increase the spring tension to work with a fully accessorised tower.**

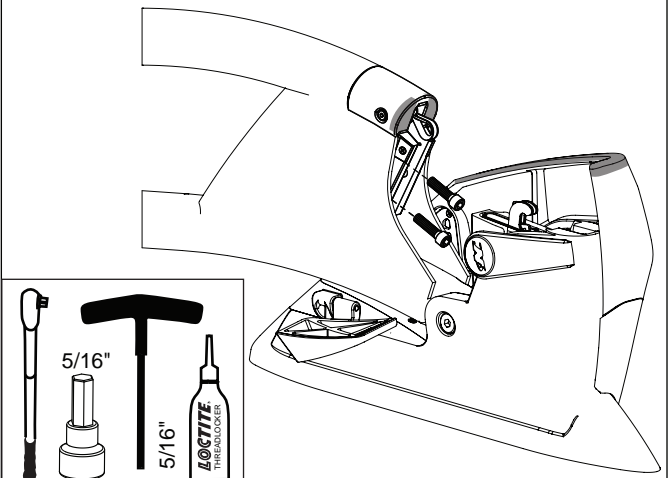
This is how the top of your spring assembly should look after you have increased the tension on your spring assembly.

**H**

Carefully push the newly adjusted spring assembly back into the tower.

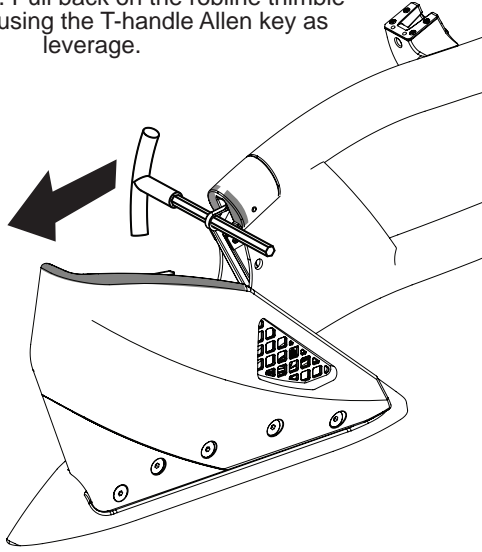
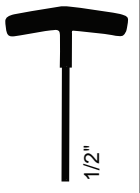
**I**

Re-secure the spring assembly to the tower using the 2 bolts from Step D. Apply red Loctite to the bolts first. Use a 5/16" Allen key or Allen socket. The use of an extension for your Allen socket may be required. Be careful not to scratch the paint of parts that are close by.

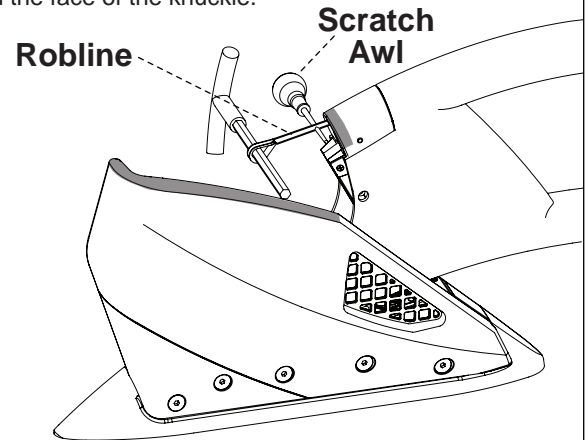
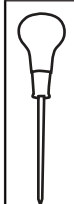


**J**

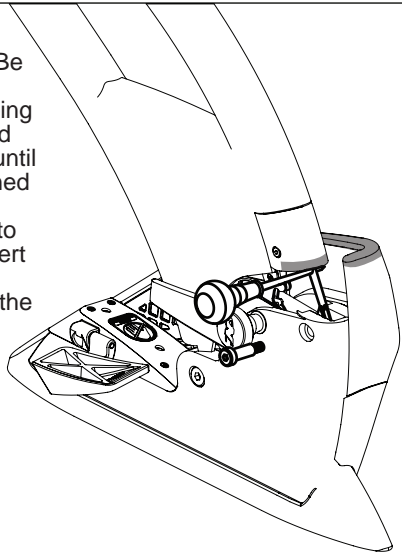
Insert a 1/2" T-handle Allen Key into the robline thimble as illustrated. Make sure you have a helper close by. Pull back on the robline thimble with 2 hands using the T-handle Allen key as leverage.

**K**

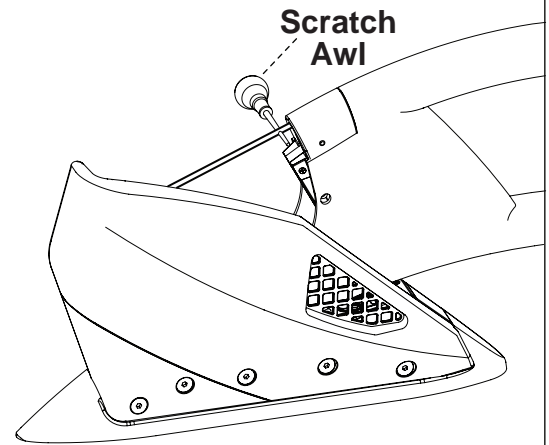
With the robline thimble pulled back, have your helper insert the scratch awl in the robline just below the knuckle. Be sure to insert the scratch awl in the center of the robline with the handle facing the inside of the tower. With the scratch awl in place, slowly release the tension on the robline thimble and remove the T-handle Allen key. Make sure the sharp point of the scratch awl does not stick out beyond the face of the knuckle.

**L**

One person must now slowly raise the tower. Be certain as you raise the tower that nothing is going to hit or damage painted parts. Raise the tower until the robline thimble is lined up with the thimble bolt hole. Apply Red loctite to the thimble bolt. Re-insert the thimble bolt into the tower foot and through the thimble.

**M**

Fold the tower again to release pressure on the scratch awl. Carefully remove the scratch awl. Remove the masking tape from the knuckle and exterior mount plate.

**N**

REPEAT STEPS C - M FOR THE PORT SIDE OF YOUR TOWER. THE STARBOARD SIDE WAS ILLUSTRATED FOR THESE INSTRUCTIONS

