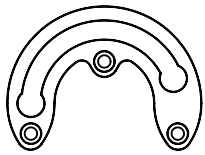


SERVICE KIT INCLUDES

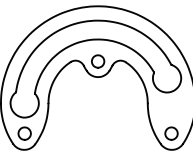
B715-0026

Starboard

1x Starboard ---
Swivel Plate
(Stainless Steel)



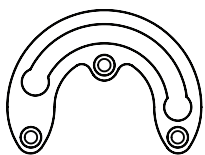
1x Starboard ---
Swivel Wear
Plate (Brass)



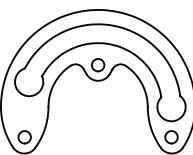
B715-0027

Port

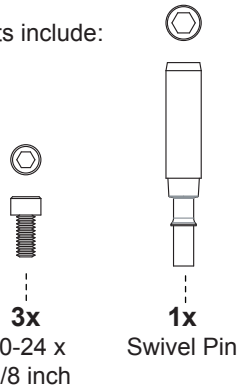
1x Port ---
Swivel Plate
(Stainless Steel)



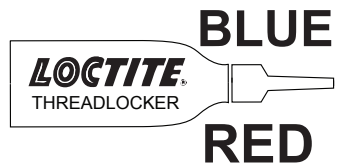
1x Port ---
Swivel Wear
Plate (Brass)



All kits include:

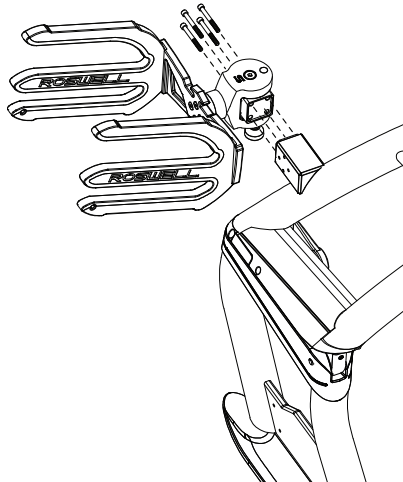


TOOLS REQUIRED

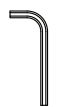


1/4" Allen Key
3/16" Allen Key
9/64" Allen Key

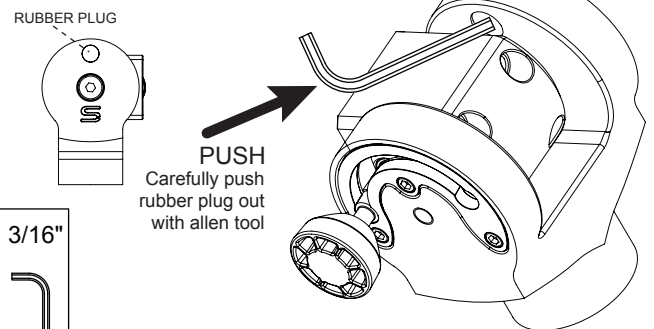
A Remove the 4 bolts that attach the board rack to the tower. Make sure you are supporting the rack when removing the bolts to prevent any damage to the tower or rack.



3/16"



B Remove black rubber plug from the swivel body by pushing it out with your allen key. Be careful not to scratch the swivel.



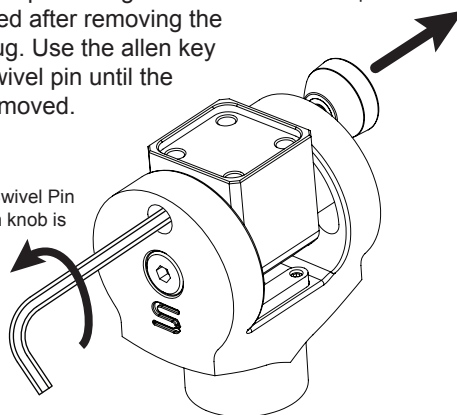
3/16"



C Align swivel body like shown to access the swivel pin through the hole you exposed after removing the black rubber plug. Use the allen key to loosen the swivel pin until the push knob is removed.

Loosen Swivel Pin
until push knob is
released

Remove push knob

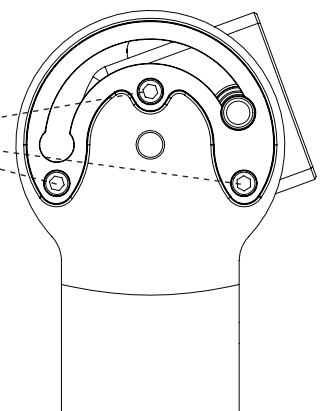


1/4"



D Rotate swivel to the inward locked position. Remove the 3 bolts that are holding the ride plates on.

REMOVE
THESE BOLTS



9/64"



www.roswellmarine.com

Information: info@roswellmarine.com

Warranty: warranty@roswellmarine.com

If you have any questions please call : 1-321-638-1331



E

Remove the components shown listed in the drawing.

Verify spring is located under the swivel pin and is providing spring force to the pin.

Install the new components that are supplied with your service kit. Make sure they are installed to match the drawing with the spring in the proper position.

Use blue loctite on these bolts.

Note: Your service kit doesn't include a spring.

****Recommended : Torque bolts to 8 ft-lbs****

****Use BLUE Loctite prior to assembling****

9/64"



10-24 x 3/8" SH CS SS



STAINLESS STEEL SWIVEL PLATE
(COUNTERBORES UP)



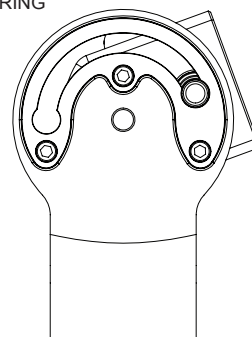
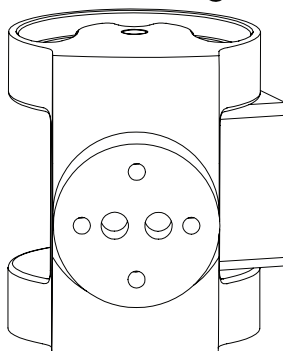
BRASS SWIVEL WEAR PLATE



SWIVEL PIN



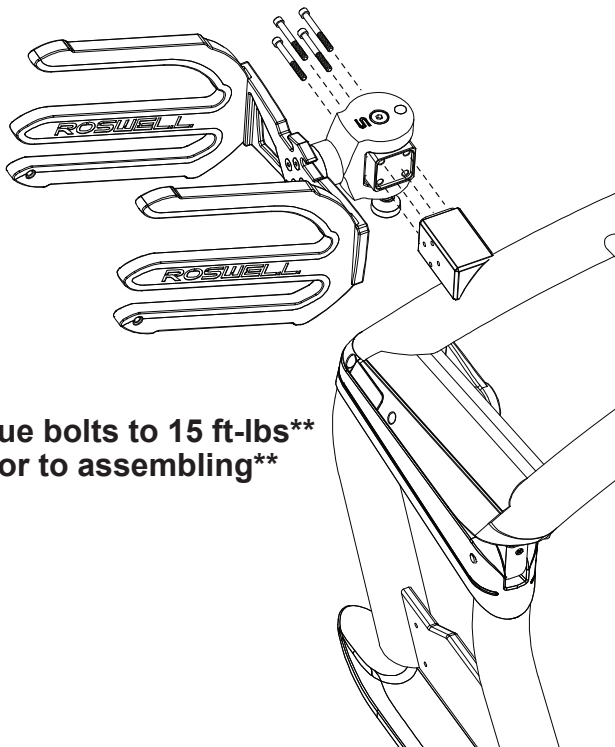
SWIVEL PIN SPRING



TOP VIEW

F

Now that the swivel is fully assembled with the new components the board rack can be reinstalled to the tower using the 4 bolts that were removed in step A. Be sure to use red loctite on these bolts.



****Recommended : Torque bolts to 15 ft-lbs****
****Use RED Loctite prior to assembling****

3/16"



www.roswellmarine.com

Information: info@roswellmarine.com

Warranty: warranty@roswellmarine.com

If you have any questions please call : 1-321-638-1331



Rev. 10-Aug-17

Pg. 2/2