

COBALT BOATS

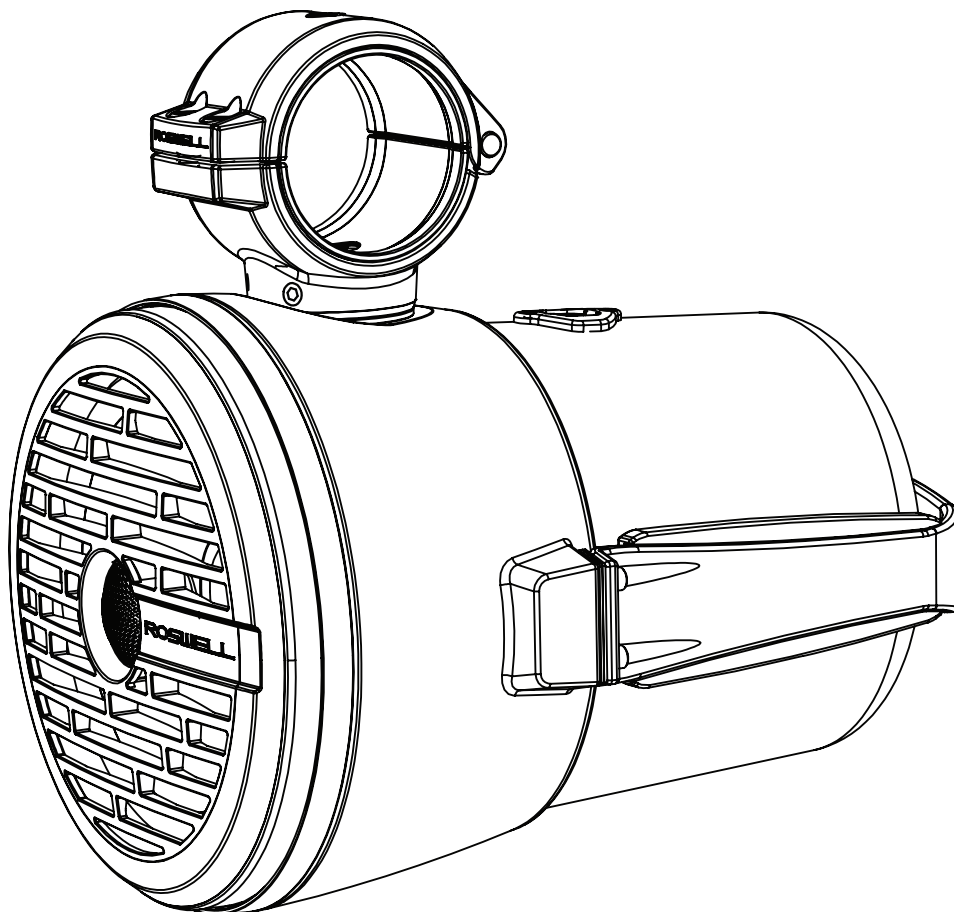
ROSWELL.

www.roswellmarine.com

R1

8" Tower Speakers

Installation & Usage Instructions



Part # C919-415377/415378

Information: info@roswellmarine.com

Warranty: warranty@roswellmarine.com

If you have any questions please call : 1-321-638-1331



ROSWELL.

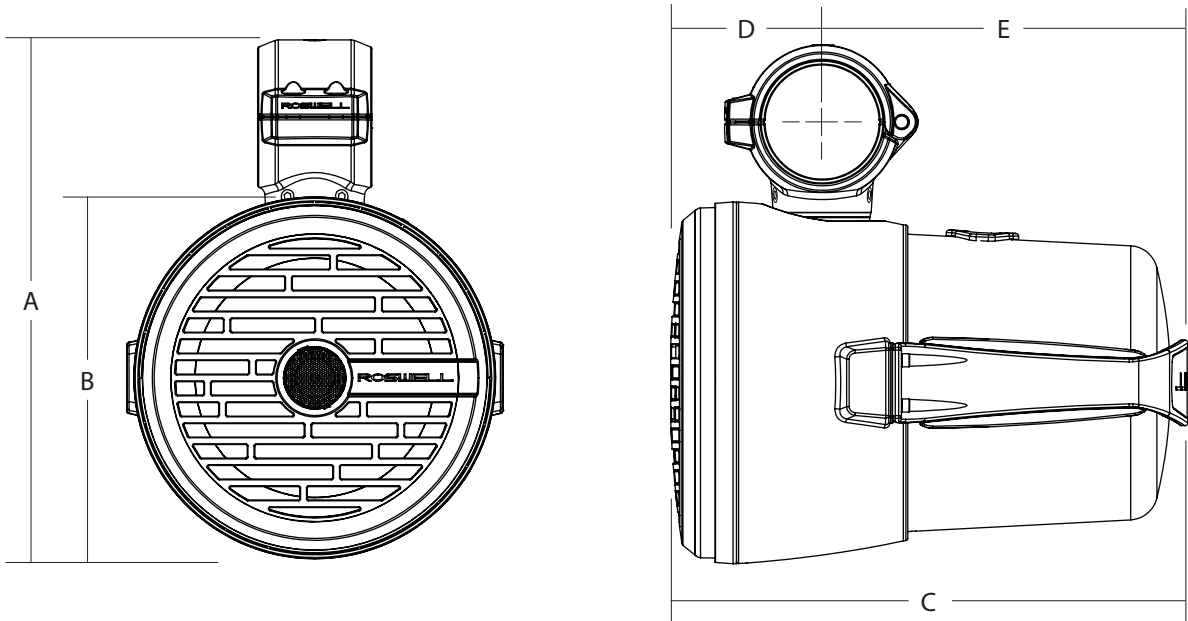
Welcome to the family.

Thank you for purchasing the best marine speakers in the world. After years of development and testing, we are proud to introduce the R1 Series marine speakers, built to outlast - and outperform - every other marine speaker on the market. We at Roswell started a revolution in the wakeboard industry back in 1998, and have since expanded into marine audio and other branches of the marine industry. Even now, nearly 20 years later, we continue to push the boundaries.

We are fully committed to going past industry expectations every day to make your boating experience more enjoyable. With the input of our dealers, team riders, and boaters around the world, our goal remains to redefine the marine industry day in and day out. We will not be confined to our desks; we are out on the water testing our full line of products to ensure your days on the water are as hassle-free and enjoyable as possible.

The R1 Series is simply the latest iteration of that commitment. Thanks again for choosing Roswell and keep an eye out for more dominating technology throughout the season.

If you have any questions about your speakers or questions regarding installation, please contact your authorized Roswell dealer. If you have further questions, please don't hesitate to contact us directly at (321)-638-1331 or by emailing info@roswellmarine.com.

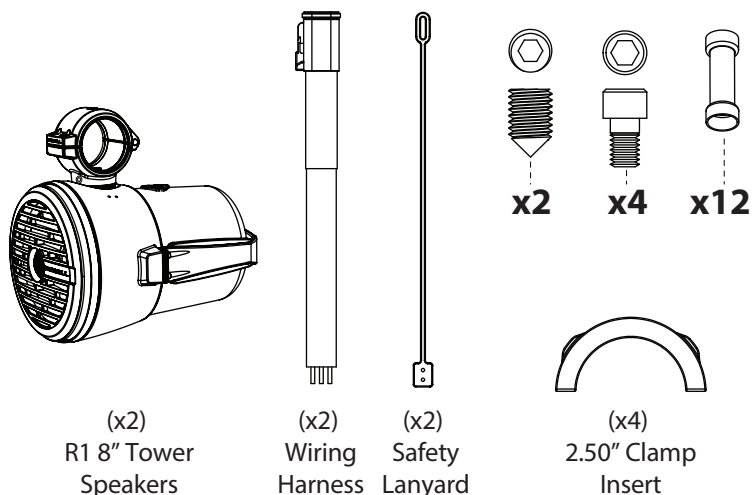


FEATURES

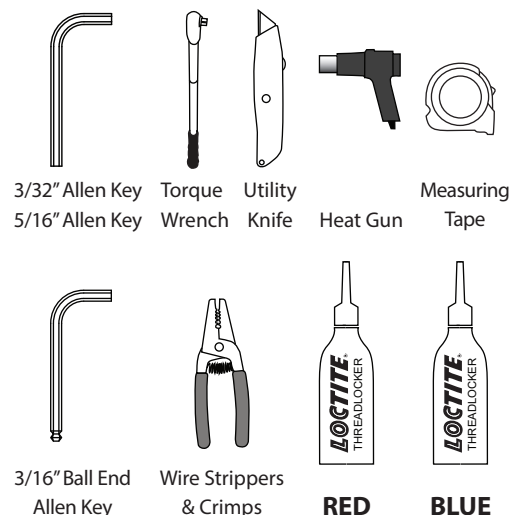
- Salt water friendly
- Laser etched logos
- Incredible sound quality from the R1 8" speaker
- Billet machined Roswell rotating 3" clamp with 2.375" insert
- RGB LEDs are compatible with Roswell RGB LED controller for fully customizable lighting

Description	Dimension
A (Overall Height)	13.620" / 346mm
B (Speaker Diameter)	9.496" / 241mm
C (Overall Length)	13.583" / 345mm
D (Center Clamp to Front)	3.975" / 101mm
E (Center Clamp to Rear)	9.607" / 244mm

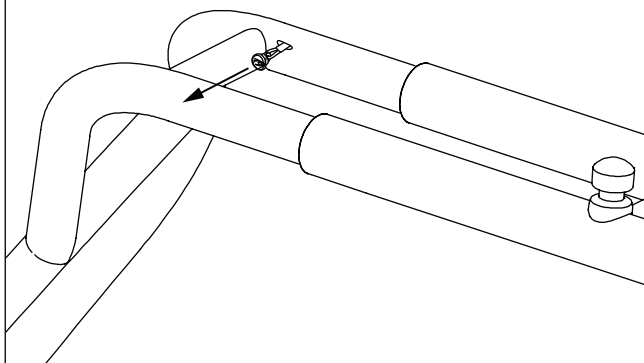
PACKAGE CONTENTS



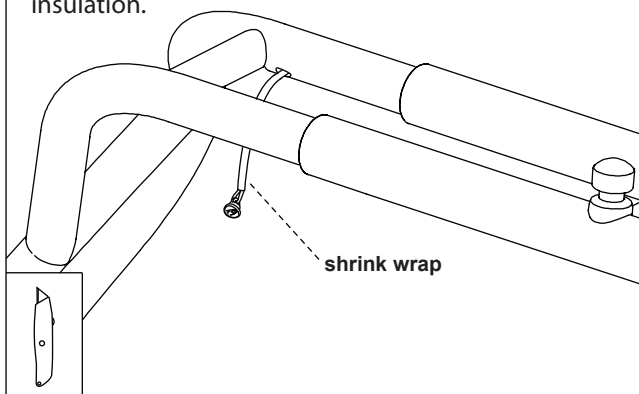
TOOLS & SUPPLIES NEEDED

**A**

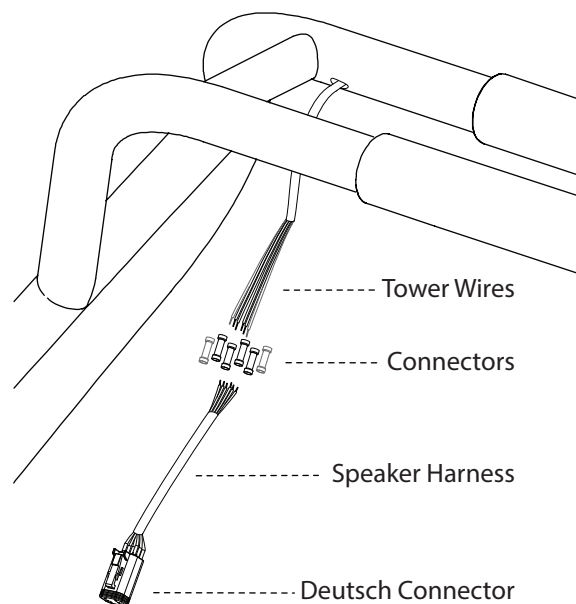
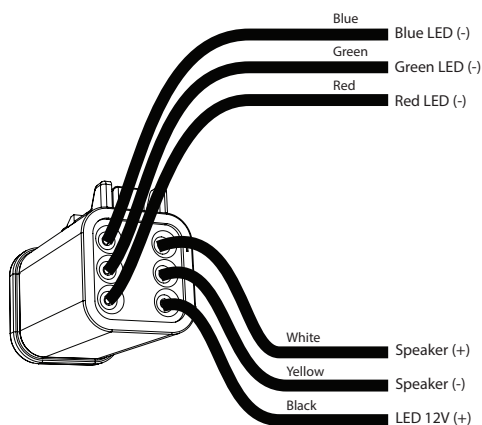
Locate the wire exit points on your tower and remove the plugs to access the wires. Carefully pull the wires out of the tower.

**B**

Carefully cut the first piece of shrink wrap with a utility knife to expose all of the wires and remove the plug. Be very cautious not to cut through the wire's insulation.

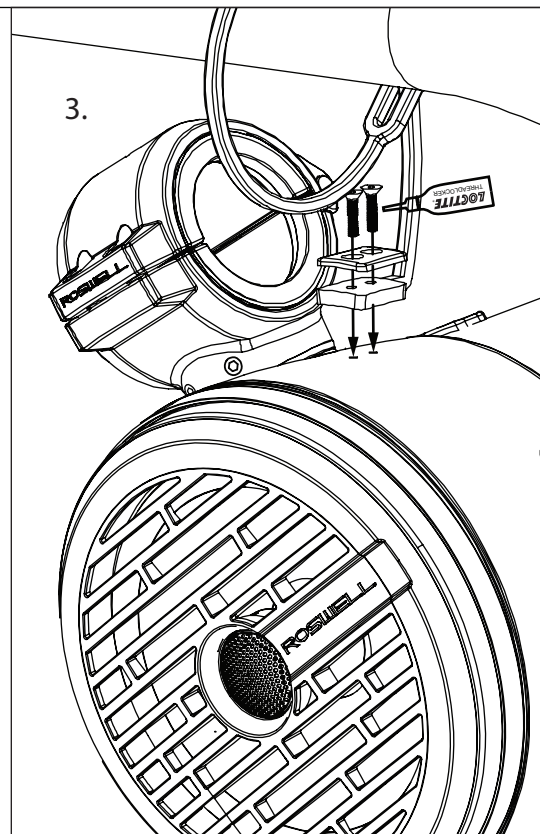
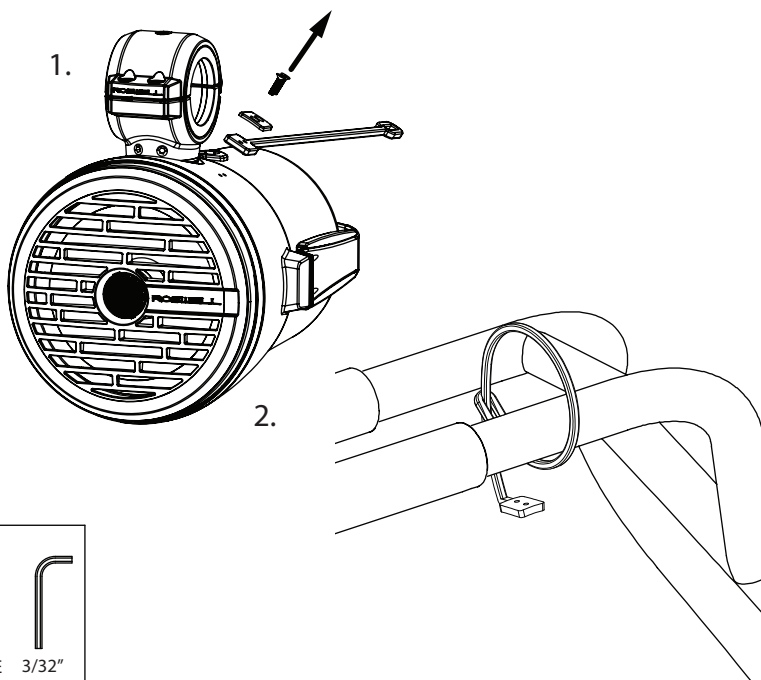
**C**

- 1) Use wire strippers to expose 1/4" of wire on all wires.
- 2) Connect the tower wires to the speaker wiring harness according to the LED configuration you plan to use.
- 3) Heat shrink the connectors.
- 4) Carefully push the wires back into the tubing.

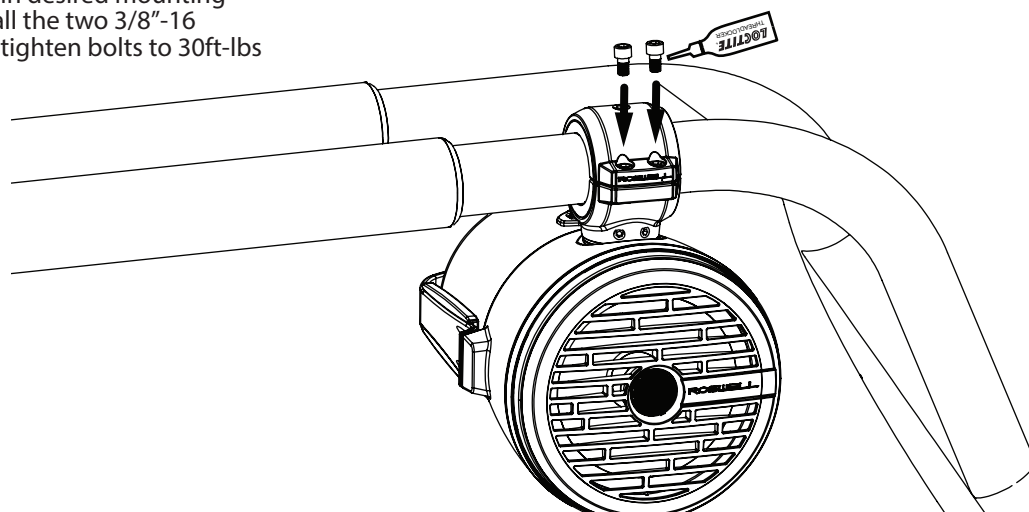
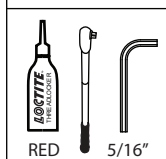


D

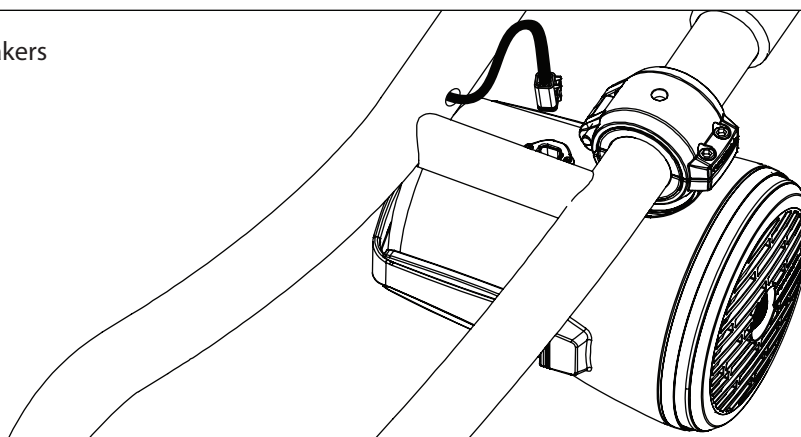
1. Remove the safety lanyard from the speaker can.
2. Wrap the safety lanyard around the tower tube you will be mounting your speaker to and thread the lanyard through its loop on the end to make a self tightening loop.
3. Re-attach the safety lanyard to the speaker. Apply blue thread lock to the screws and tighten.

**E**

- Open clamp, position speaker in desired mounting location, close clamp and install the two 3/8"-16 screws with red threadlock and tighten bolts to 30ft-lbs to lock speaker in place.

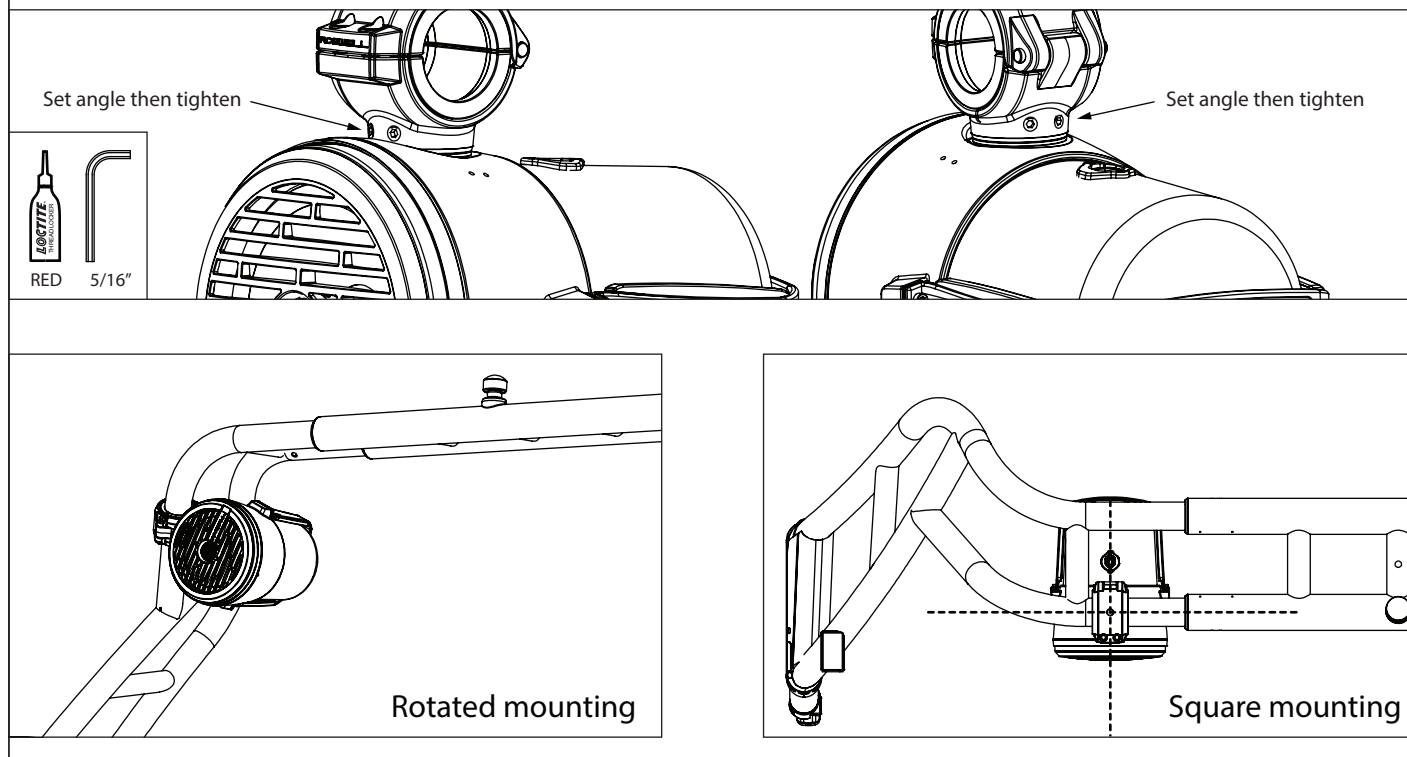
**F**

- Plug in both speakers



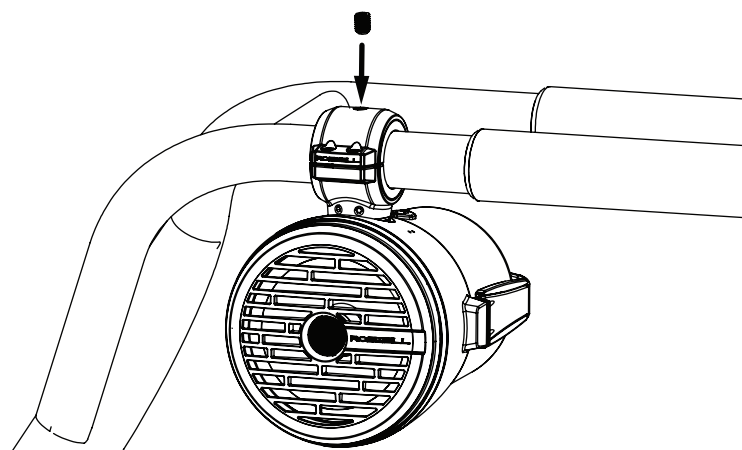
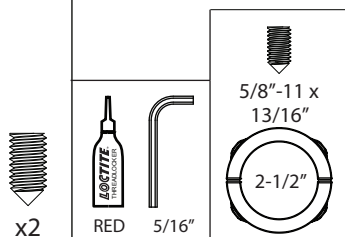
G

Determine your mounting angle for the speaker. If you are not mounting the speaker perpendicular to the tower tubing: Remove the 4 set screws using a ball end allen key rotate the speaker to the desired angle (this may require some force, so be careful), apply red thread lock to the set screws and re-install the set screws.

**H**

Double check mounting position is correct before completing this step

Install the 5/8"-11 clamp set screws with red thread lock to secure the clamps into place.
Note: This set screw will leave a mark on your tower when it is tightened.



Use & Care

These speakers are built to the highest standards of marine durability. However, they are still a sensitive piece of electronic equipment. When cleaning, avoid hosing down the speakers directly and do not use harsh cleaners on the R1's as they could damage the finish. Simply wiping the speaker down with a damp cloth should be sufficient to ensure years of enjoyment.

It is necessary to regularly check the tightness of the bolts securing the R1 speaker to your tower. Bolts and screws tend to rattle loose over time due to the vibrations and shaking that your boat experiences while on the water or in transit.

Covering your speakers with something removable like saran wrap or aftermarket fabric covers during transit or storage can save you a lot of time cleaning and also protect your speakers from damage.