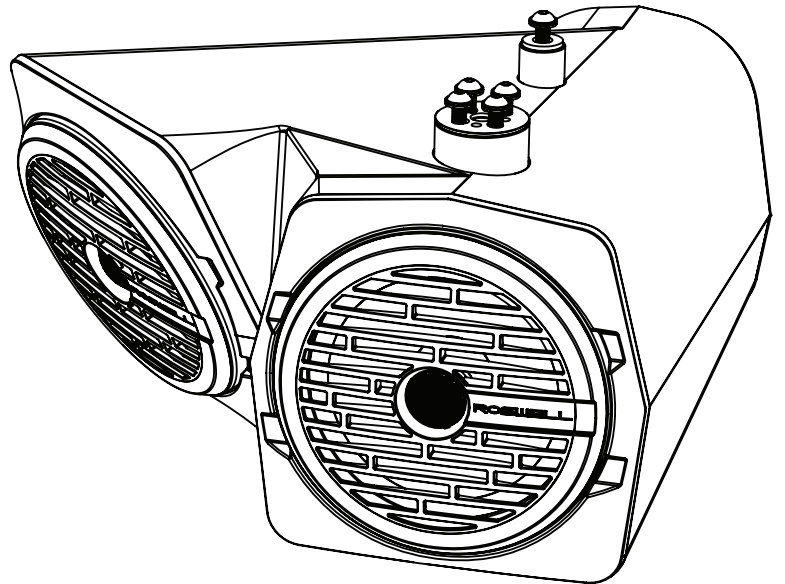
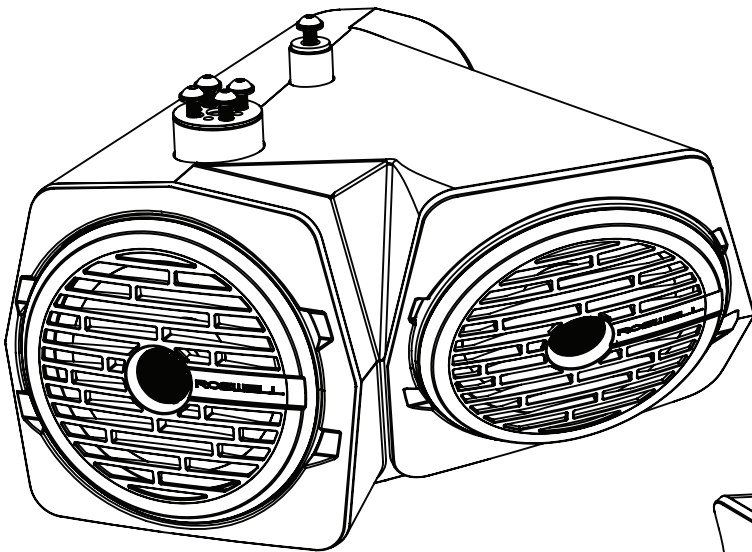


ROSWELL.

www.roswellmarine.com

Centurion Coverfire Speaker

Installation & Usage Instructions



Part # C913-1906
Part # C913-1906W

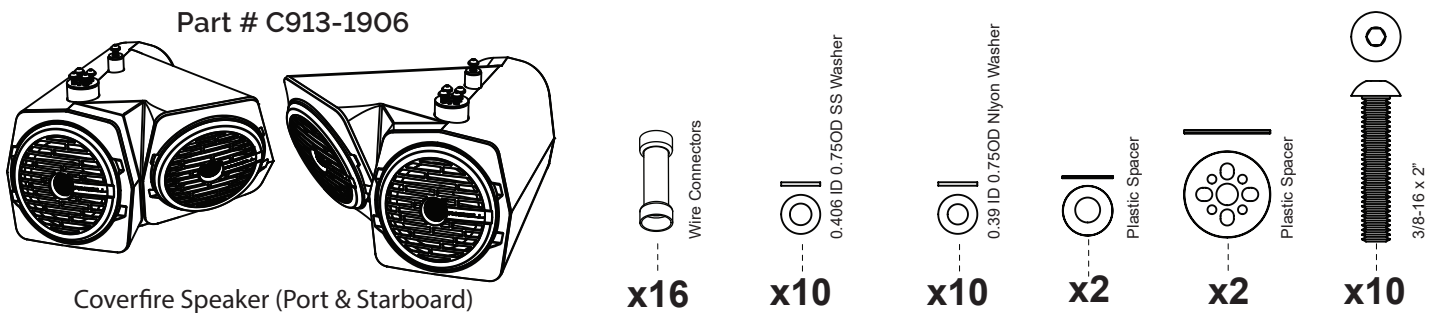
Information: info@roswellmarine.com
If you have any questions please call : 1-321-638-1331



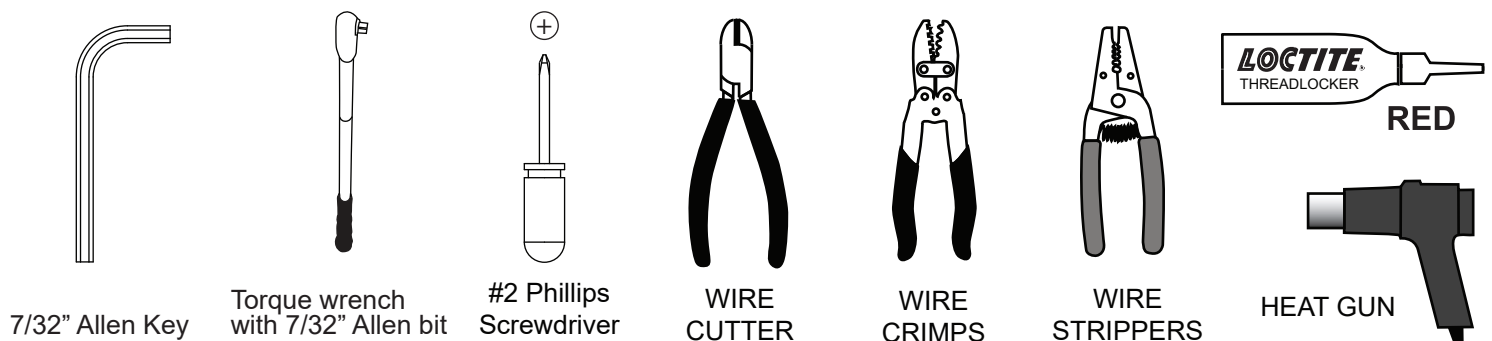
! ATTENTION !

- Bolts and screws tend to rattle loose over time due to the vibrations and shaking that your boat experiences while on the water or in transit. Always check all your speakers are securely fastened by checking speakers bolts for tightness before using your boat. If any bolts are found to be loose remove them, apply red threadlock and re-tighten the bolts.
- Never hang off of the speaker under any circumstance.
- Be mindful of the head clearance to prevent unnecessary head injuries.
- Be aware of your tow rope being sure not to get it wrapped around the speaker or any other objects.
- These speakers are capable of easily producing sound pressure levels (SPL) in excess of 100 dB, even in an open air environment like a boat. Sound pressures at or above these levels can easily cause permanent hearing damage or loss. Be sure to use safe listening practices and protect your ears.
- Users of these speakers should be mindful of their surroundings as sound travels further over water.
- Covering your speakers with something removable such as aftermarket covers during transit or storage can save you a lot of time cleaning and also protect your speakers from damage.

PACKAGE CONTENTS



TOOLS NEEDED

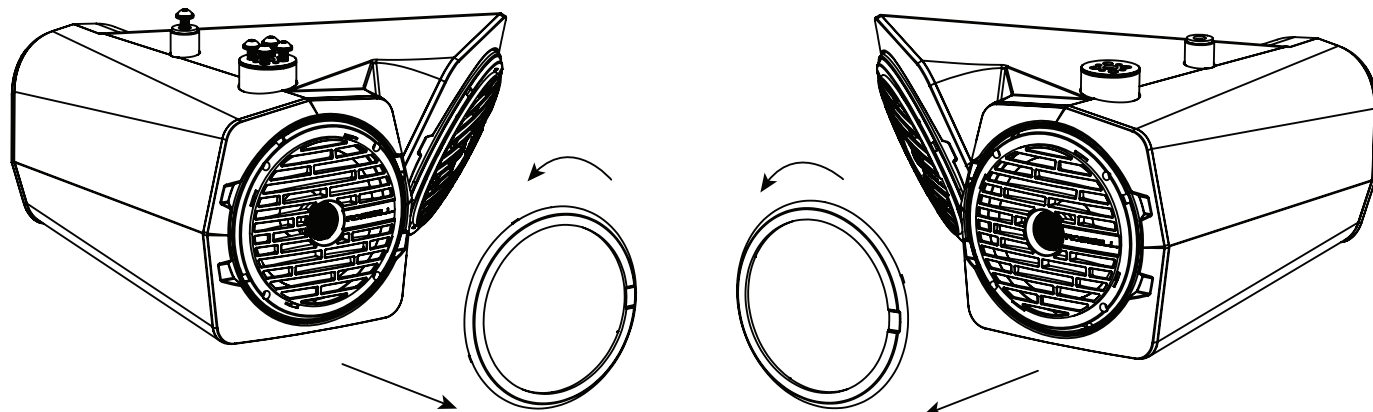


! ATTENTION !

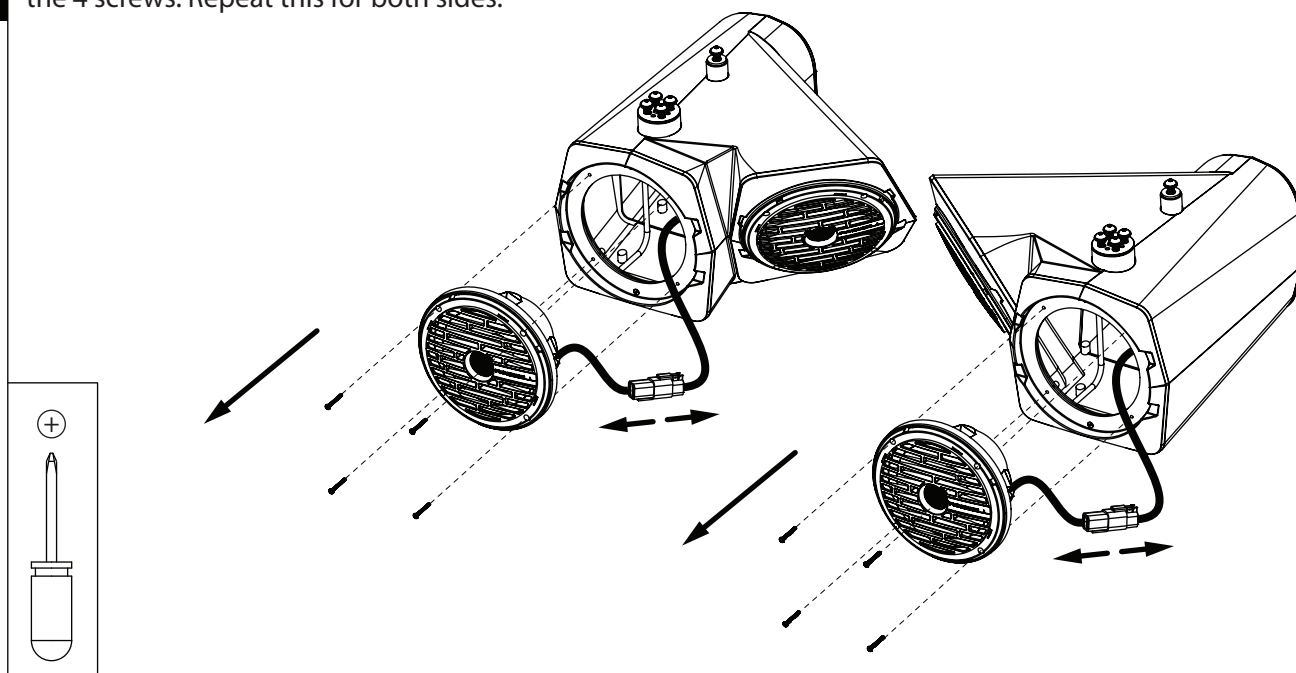
Roswell strongly recommends that a routine inspection of hardware and components be done to ensure proper function and safety and to maximize product life. If bolts are found to be loose, discontinue use until thread lock is re-applied and bolts are re-tightened.

A

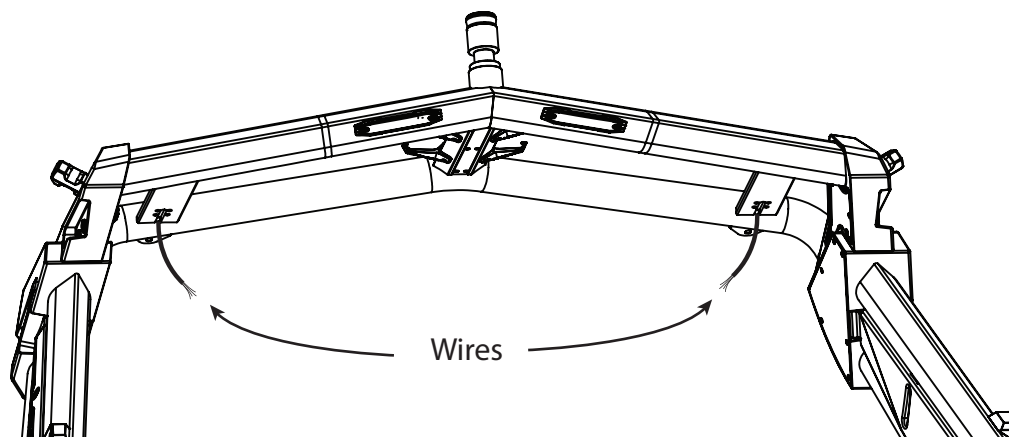
Remove the trim ring that cover the speaker mounting screws by twisting counter clock-wise and lifting away from the speaker housing. Perform this for both sides.

**B**

Remove and disconnect the main 8 inch rear facing speaker. Access the inside of the speaker housing by removing the 4 screws. Repeat this for both sides.

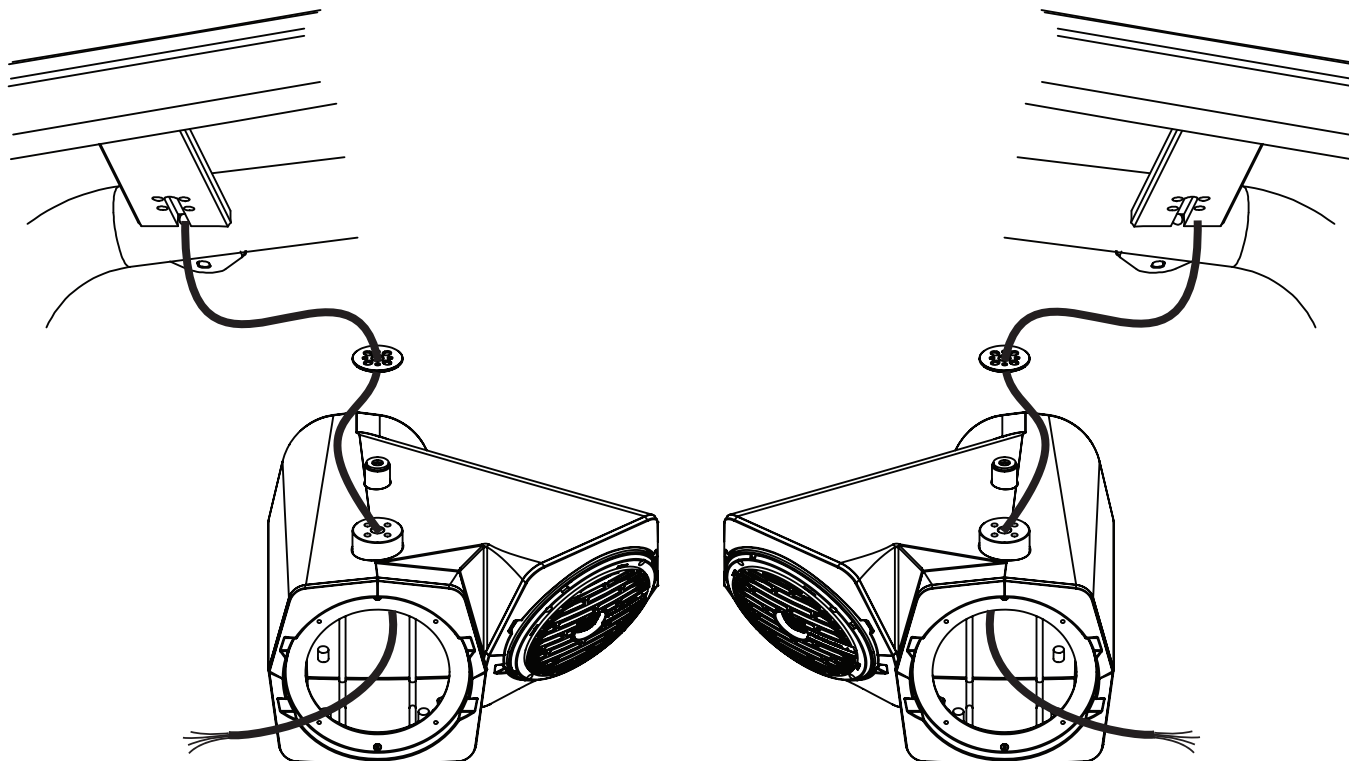
**C**

Pull the wires out of the tower from the holes under the speaker mounting plates on each side.



D

Pull the wires out out of the tower. Feed the wires from the tower into the center hole of each speaker mount spacers and mounts. Repeat for both sides.

**E**

Mount both speaker housings using the plastic spacers and hardware provided. We recommended performing this installation with two people. Repeat this step for both sides. Apply red thread locker to all 10 bolts and secure the speakers to the tower. Be sure not to pinch any wires as you are securing the tower speakers to the tower.

**x2****x2**

Nylon

**x10**

SS

**x10****x10****x10**

SS Washers

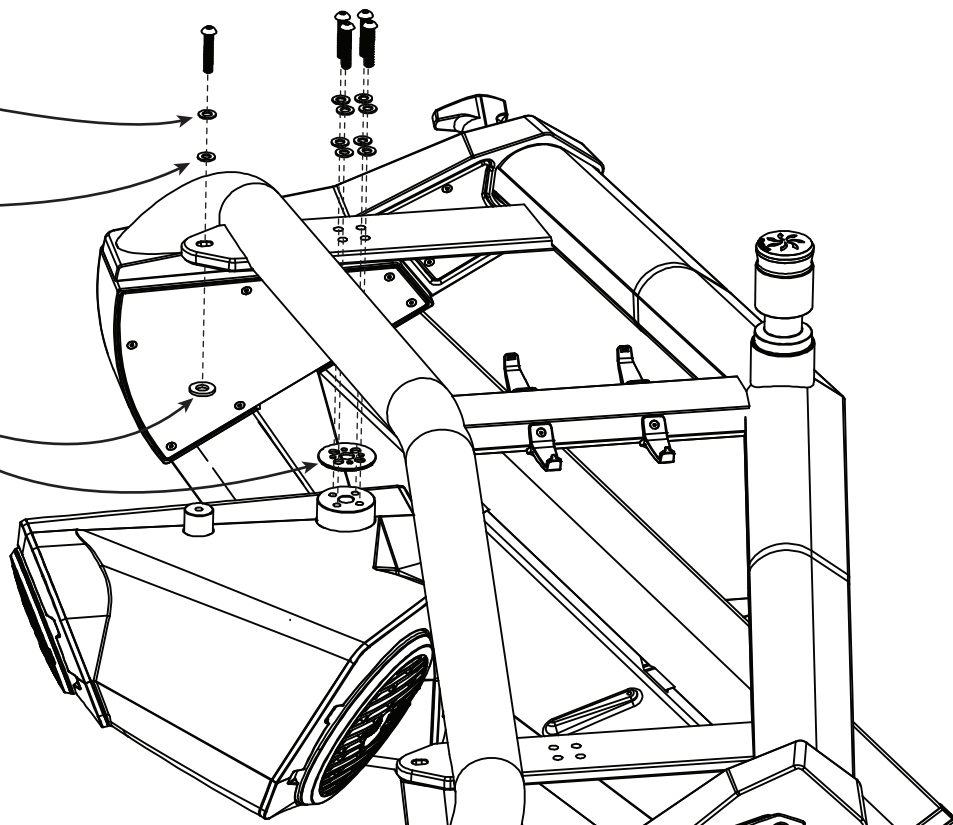
Nylon Washers

Plastic Spacers

Torque bolts
to 25ft-lb



7/32"

LOCTITE
RED

x16

