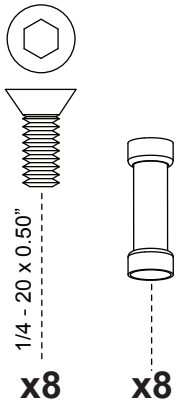


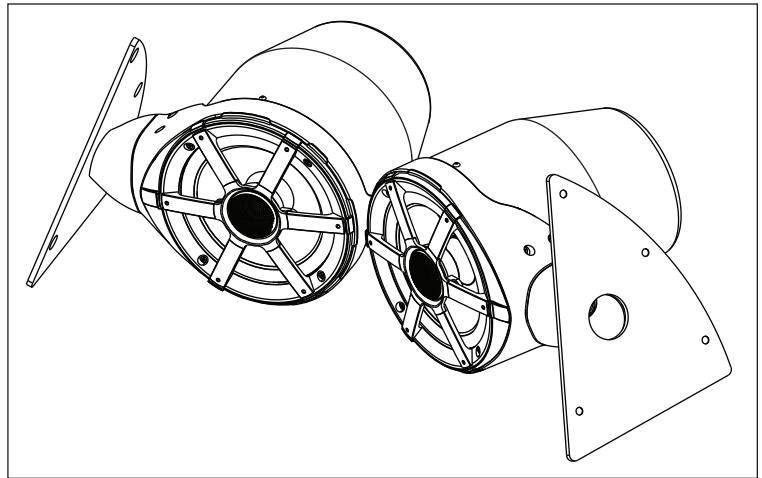
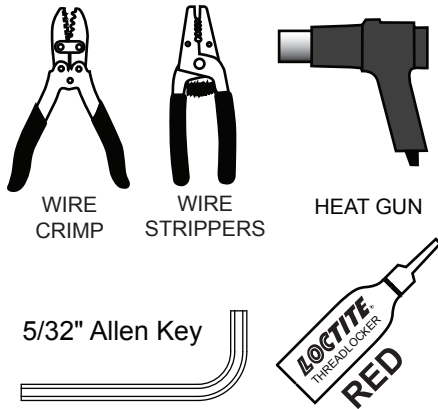
SUPRA

PRO EDGE Side Spin Speakers Assembly Instructions

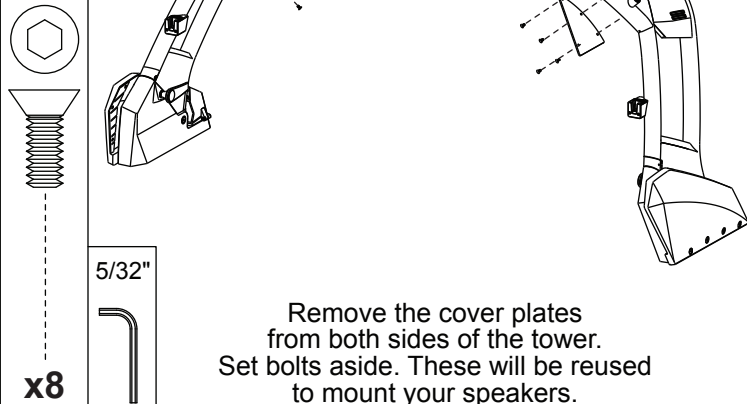
Speaker Hardware



Tools Required

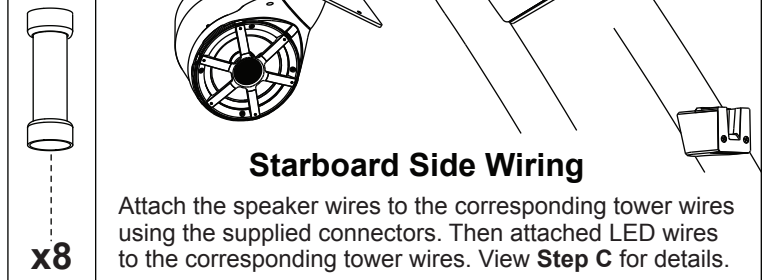


A



Remove the cover plates from both sides of the tower. Set bolts aside. These will be reused to mount your speakers.

B



Starboard Side Wiring

Attach the speaker wires to the corresponding tower wires using the supplied connectors. Then attached LED wires to the corresponding tower wires. View **Step C** for details.

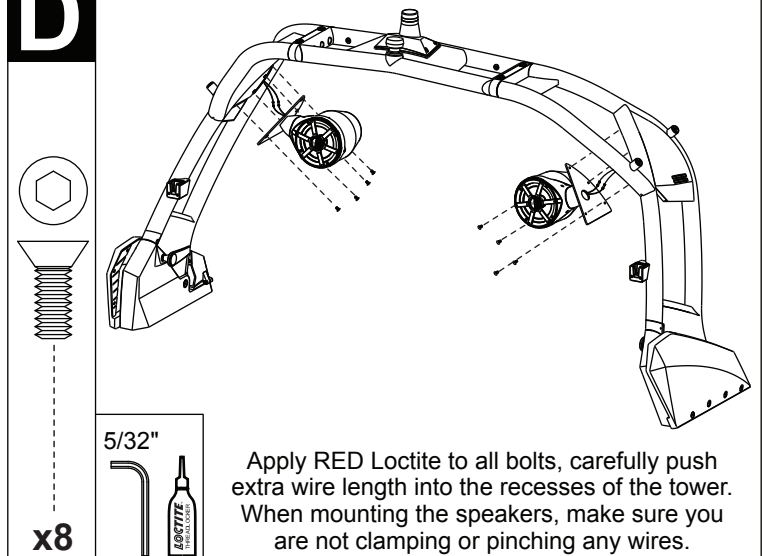
C

1) Use wire strippers to expose 1/4" of wire on all wires.

Port Tower	Crimp	Speaker
Green		Green
Green & Black		Green & Black
Light Blue		Orange or Yellow
Black		Blue
Stbd Tower	Crimp	Speaker
Purple		Purple
Purple & Black		Purple & Black
Light Blue		Orange or Yellow
Black		Blue

2) Slide matching wires into opposing ends of the connectors and crimp.
3) Heat shrink the connectors.

D



Apply RED Loctite to all bolts, carefully push extra wire length into the recesses of the tower. When mounting the speakers, make sure you are not clamping or pinching any wires.

