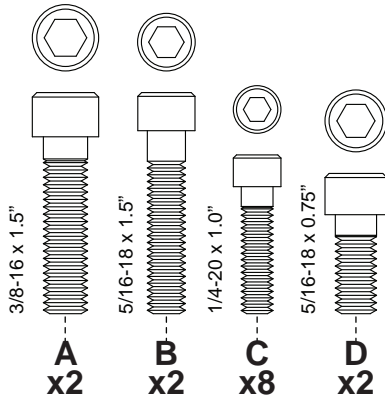


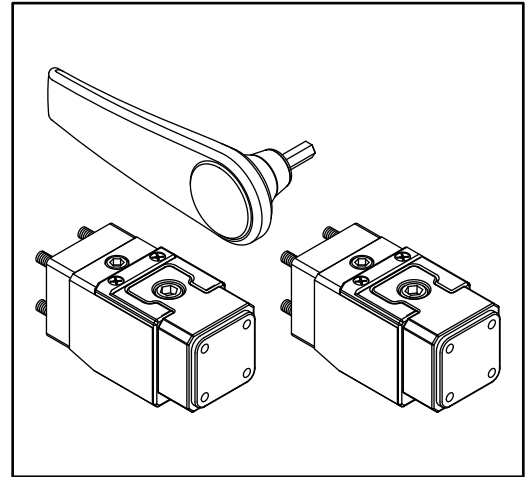
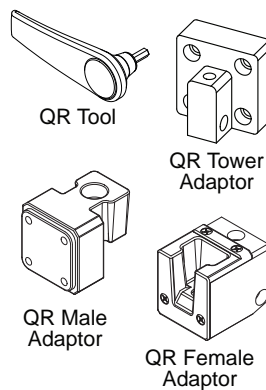
### Hardware



### Tools Required

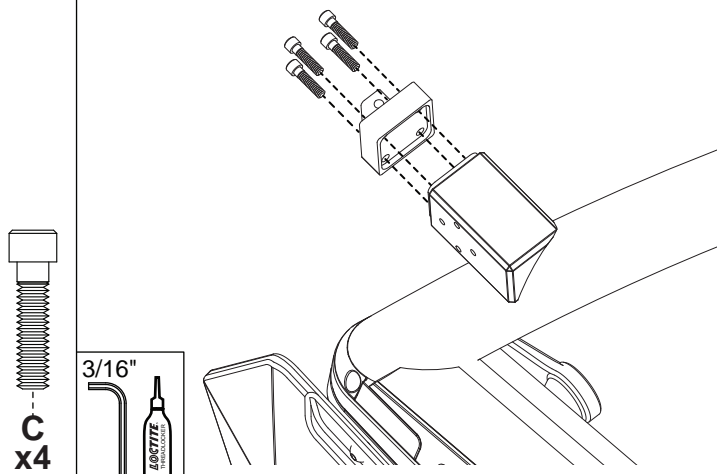


### Parts



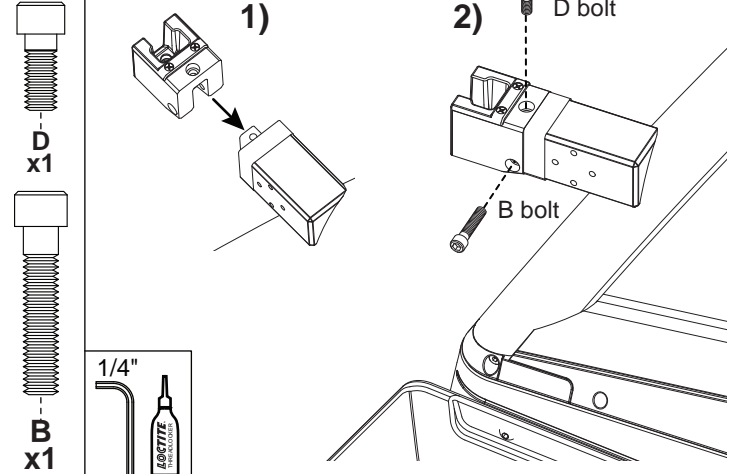
## A

Apply RED Loctite to 4x C bolts and mount the QR Tower Adaptor to the tower mount as illustrated. Torque bolts to 15 ft lbs.



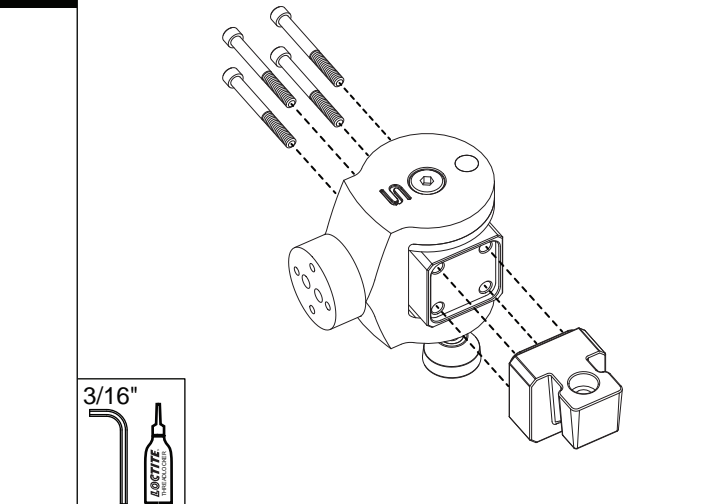
## B

First, place the QR Female Adaptor onto the QR Tower Adaptor. Then, apply RED Loctite to a B bolt and a D Bolt and fasten as illustrated. Torque bolts to 15 ft lbs.



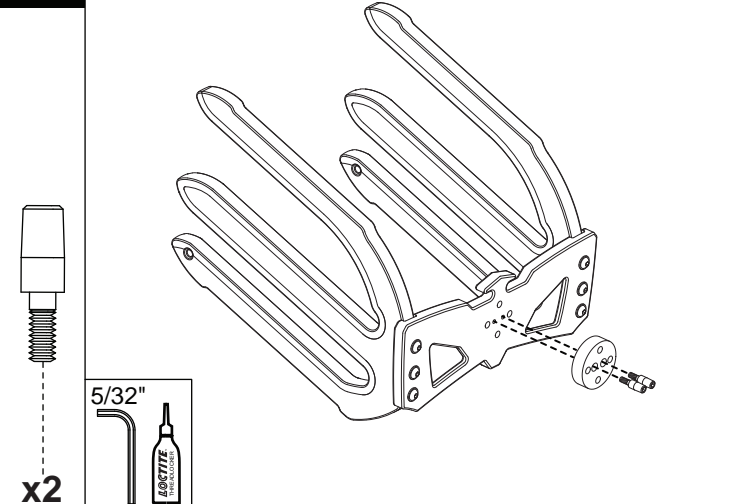
## C

Apply RED Loctite to the Swivel's 4 bolts and mount the QR Male Adaptor to the Swivel. Torque bolts to 15 ft lbs.

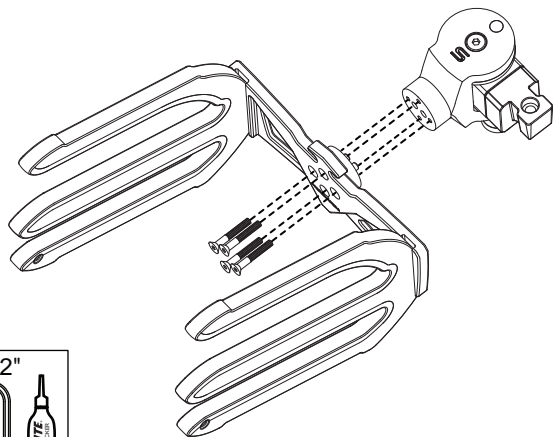


## D

Make sure to apply RED Loctite to the board rack's 2 custom bolts and assemble the spacer to rear of the backing plate before continuing. Torque bolts to 9.5 ft lbs.



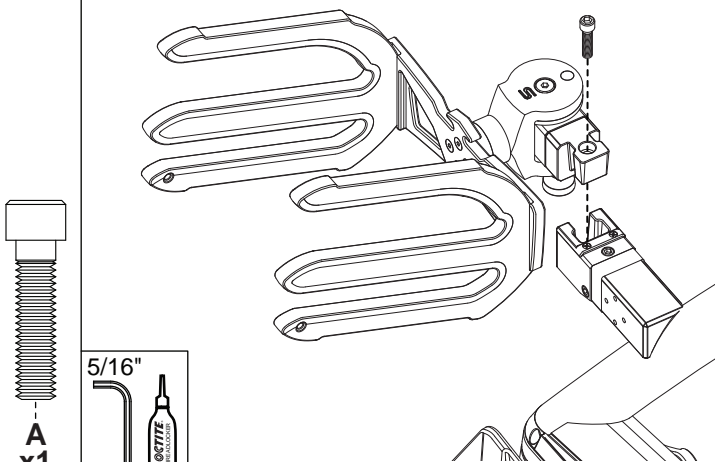
**E** Apply RED Loctite to the Board Rack's 4 bolts and mount the rack to the Swivel. Torque bolts to 15 ft lbs.



5/32"



**F** Carefully slide the Male Adaptor into the Female Adaptor, and fasten together with an A bolt and your QR tool.



A  
x1

5/16"

