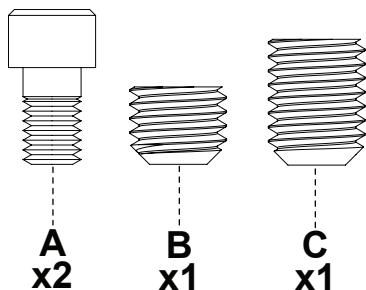
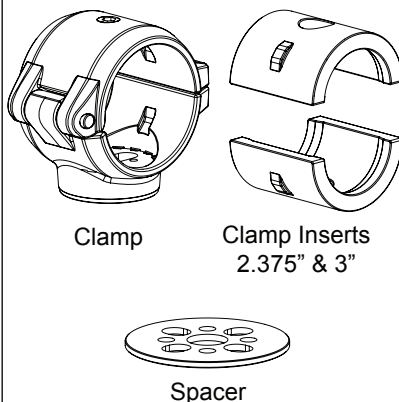


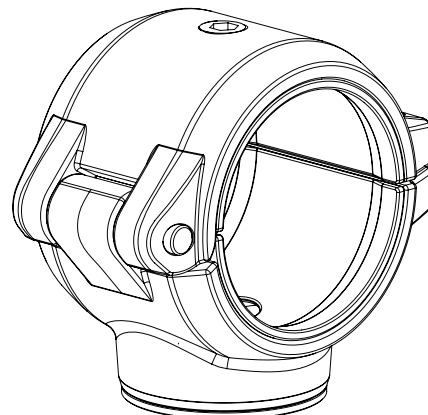
HARDWARE



PARTS



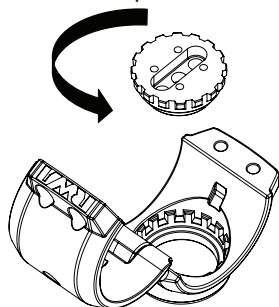
TOOLS REQUIRED



A

Test fit the clamp to your tower and rotate the internal rotational disc to orient your board rack or speaker in the desired position.

Note - Internal disk will rotate through each position for perfect alignment



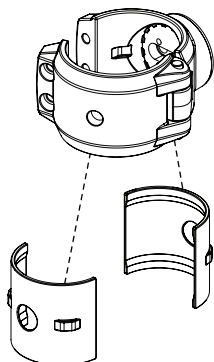
B

Apply RED Loctite to your speaker or board rack hardware and fasten to universal clamp.

Make sure the plastic spacer is sandwiched between the clamp and product it is supporting

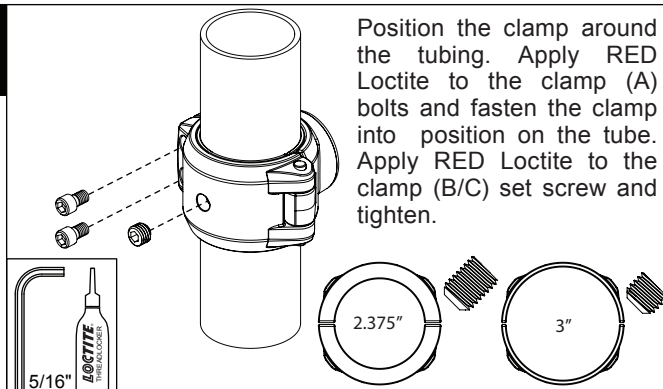


C



Depending on the tubing diameter of your tower, place the proper size plastic insert into the clamp, 1.9" or 2.375". (1.6", 2.0" and 2.5" are available upon request).

D



Position the clamp around the tubing. Apply RED Loctite to the clamp (A) bolts and fasten the clamp into position on the tube. Apply RED Loctite to the clamp (B/C) set screw and tighten.